

## Retail Space: 1135 Pettigrew Avenue, Regina SK

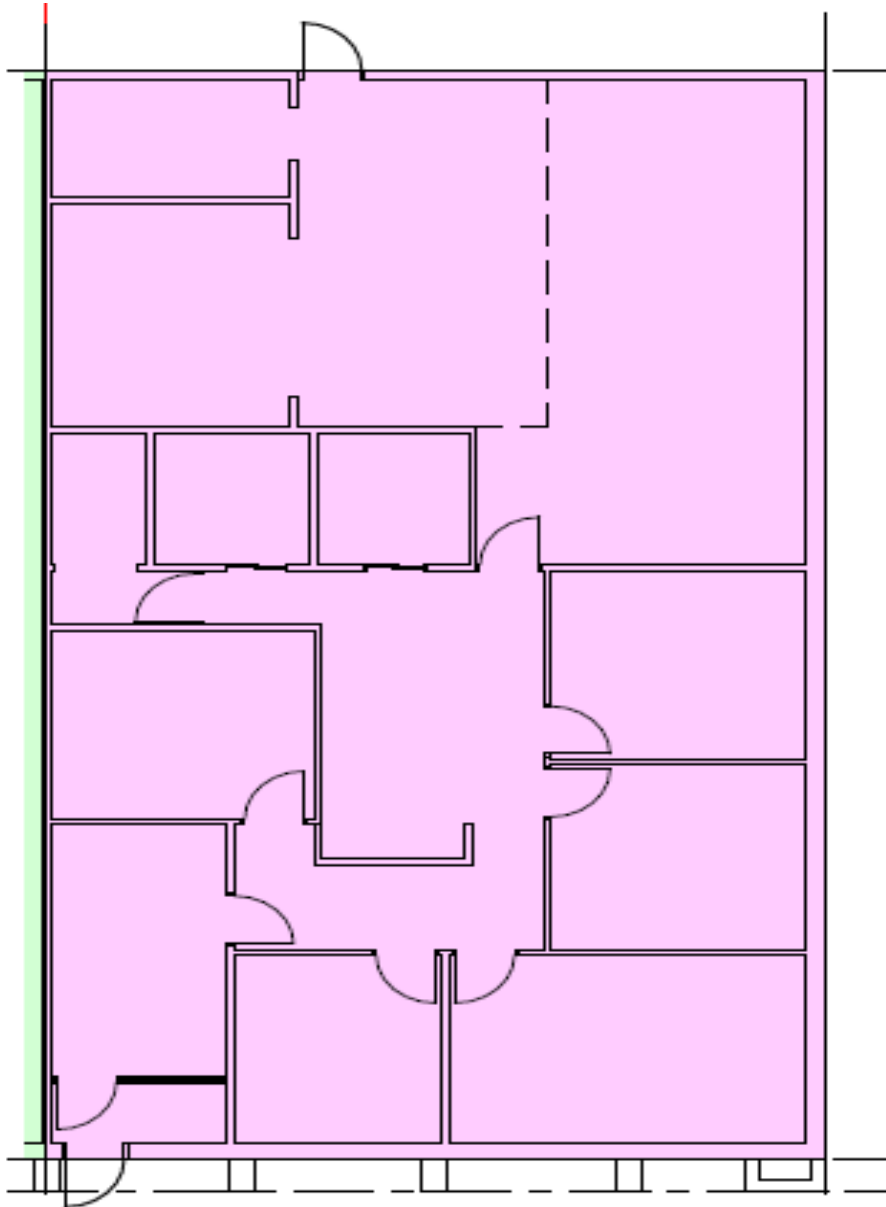


### THE LOCATION

Located in Regina's industrial hub, 1135 Pettigrew Ave offers direct access to key transportation routes.

- 1,129.61 Sq.Ft.
- \$13.00 per Sq.Ft.
- 2026 estimated Op costs \$5.74 PSF
- Free parking
- Immediate possession available

## Retail Space: 1135 Pettigrew Avenue, Regina SK





## Retail Space: 1135 Pettigrew Avenue, Regina SK

